

Concerto en do mineur (transposé en sol min.)

Alessandro Marcello (1686-1739)

Flûte
Hautbois

Adagio ♩ = 76

p

mf

p

f *p*

rit.

Adaptation par Mathieu Gaulin, 2007

Concerto en do mineur (transposé en sol min.)

Alessandro Marcello (1686-1739)

Clarinette 1

Adagio ♩ = 76

p

6

12

18

mf

24

p

30

f

p

36

rit.

Adaptation par Mathieu Gaulin, 2007

Concerto en do mineur (transposé en sol min.)

Alessandro Marcello (1686-1739)

Clarinettes 2

Adagio $\text{♩} = 76$

p

7

13

19

mf

25

p

31

f *p*

37

rit.

Adaptation par Mathieu Gaulin, 2007

Concerto en do mineur (transposé en sol min.)

Alessandro Marcello (1686-1739)

Saxophone
alto

Adagio $\text{♩} = 76$

p

Concerto en do mineur (transposé en sol min.)

Alessandro Marcello (1686-1739)

Saxophone
ténor

Adagio $\text{♩} = 76$

p

mf

p

f *p*

Adaptation par Mathieu Gaulin, 2007

rit.

Concerto en do mineur (transposé en sol min.)

Alessandro Marcello (1686-1739)

Basson

Adagio $\frac{3}{4}$ 76

p

7

13

19

mf

25

p

31

f *p*

37

rit.

Adaptation par Mathieu Gaulin, 2007

Flûte
Hautbois

Meine Seele erhebt den Herrn, BWV 648

J.S. Bach
arr. Gil Garty
adapt. M. Gaulin

$\text{♩} = 120$

Musical score for Flute/Hautbois, measures 1-30. The score is in G major, 6/8 time, and consists of 30 measures. It begins with a treble clef and a key signature of one flat (F major). The tempo is marked as quarter note = 120. The score is divided into four systems of measures: 1-8, 9-14, 15-20, and 21-30. Measure numbers 8, 15, 21, and 27 are indicated at the start of their respective systems. The piece concludes with a final measure containing a fermata and a '5' fingering instruction.

© Gil Garty; M. Gaulin

Meine Seele erhebt den Herrn, BWV 648

Clarinete 1

J.S. Bach
arr. Gil Garty
adapt. M. Gaulin

$\text{♩} = 120$

Musical score for Clarinet 1, measures 1-30. The score is in G major, 6/8 time, and consists of 30 measures. It begins with a treble clef and a key signature of one flat (F major). The tempo is marked as quarter note = 120. The score is divided into four systems of measures: 1-9, 10-15, 16-28, and 29-30. Measure numbers 5, 10, 16, and 29 are indicated at the start of their respective systems. The piece concludes with a final measure containing a fermata and an '8' fingering instruction.

© Gil Garty; M. Gaulin

Meine Seele erhebt den Herrn, BWV 648

Saxophone

alto

$\text{♩} = 120$

J.S. Bach

arr. Gil Garty

adapt. M. Gaulin

4

9

15

21

27

5

© Gil Garty; M. Gaulin

Meine Seele erhebt den Herrn, BWV 648

J.S. Bach
arr. Gil Garty
adapt. M. Gaulin

Saxophone
ténor

$\text{♩} = 120$

6

12

18

24

30 *rit.*

36

Meine Seele erhebt den Herrn, BWV 648

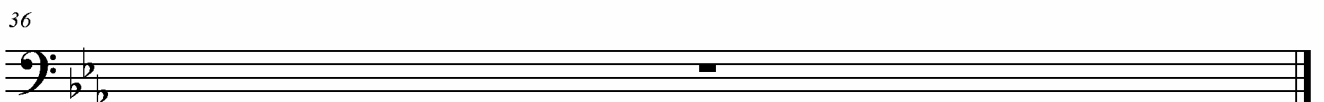
J.S. Bach

arr. Gil Garty

adapt. M. Gaulin

Basson

$\text{♩} = 120$



Flûte
Hautbois

Fugue BWV 545/2, en DO

(transposée en Sib)

J.S. Bach (1685-1750)

transc. Gil Garty

adapt. M. Gaulin

1
9
17
25
33
42
52
60
68
76
84
93
102

Clarinete

Fugue BWV 545/2, en DO

(transposée en Sib)

J.S. Bach (1685-1750)

transc. Gil Garty

adapt. M. Gaulin

15

23

30

39

48

56

64

73

80

88

96

102

110 *tr*

Sax. alto

Fugue BWV 545/2, en DO

(transposée en Sib)

J.S. Bach (1685-1750)

transc. Gil Garty

adapt. M. Gaulin

4

12

20

29

37

44

51

58

66

74

88

95

104

5 2

Sax. ténor

Fugue BWV 545/2, en DO

(transposée en Sib)

J.S. Bach (1685-1750)

transc. Gil Garty

adapt. M. Gaulin

11

18

26

34

5

47

54

61

68

76

83

14

104

Basson

Fugue BWV 545/2, en DO

(transposée en Sib)

J.S. Bach (1685-1750)
transc. Gil Garty
adapt. M. Gaulin

11

18

26

34

5

46

54

61

68

76

14

83

104